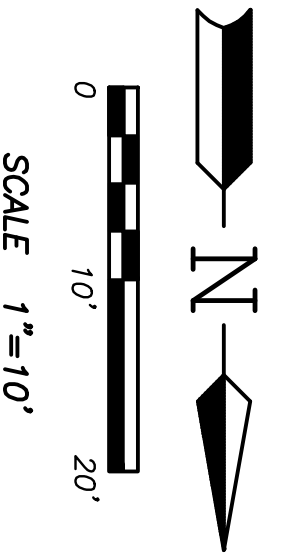


- ① PROP. SANITARY MANHOLE TYPE 'A'
STA. 41+30.1, 3.3' RT.
TOP = 946.78
8" INV. = 939.85
- ② PROP. SANITARY MANHOLE TYPE 'A'
STA. 40+30.1, 1.3' RT.
GRATE = 946.31
8" INV. = 940.25
- ③ PROP. 2-2B CATCH BASIN, AS PER PLAN
STA. 40+67.1, 1.3' LT.
GRATE = 946.80
12" INV. (S) = 943.10
8" INV. (E-W) = 943.40

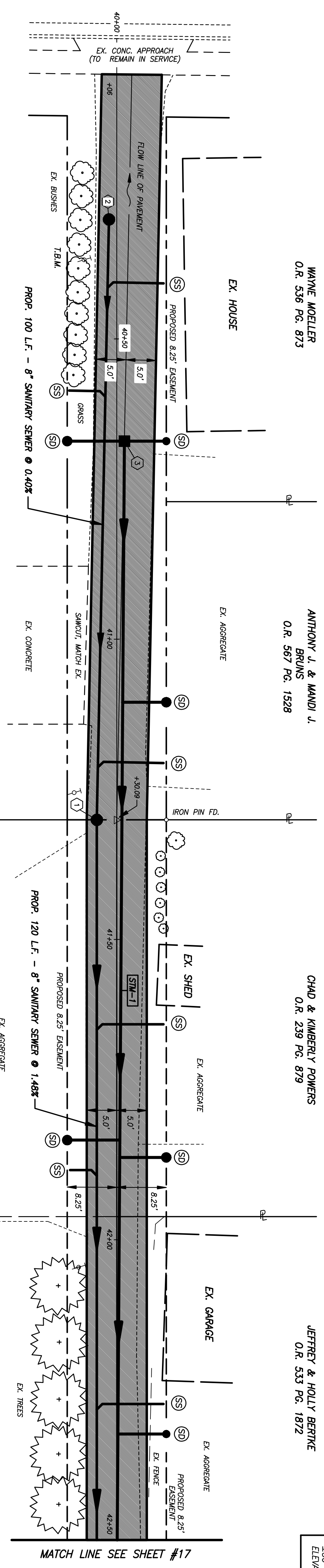
[SM-1] PROP. 183' L.F. - 12" CONDUIT TYPE 'B' @ 1.69%

NOTE:
ROOF DRAINS, FOUNDATION DRAINS AND
OTHER CLEAN WATER CONNECTIONS TO
THE SANITARY SEWERS ARE PROHIBITED.



T.B.M.
P.K. NAIL IN POLE
+50' NORTH OF MONROE STREET
ELEVATION = 947.71

MONROE STREET



MATCH LINE SEE SHEET #17

DALE H. FLEDERBOHN
O.R. 371 PG. 887

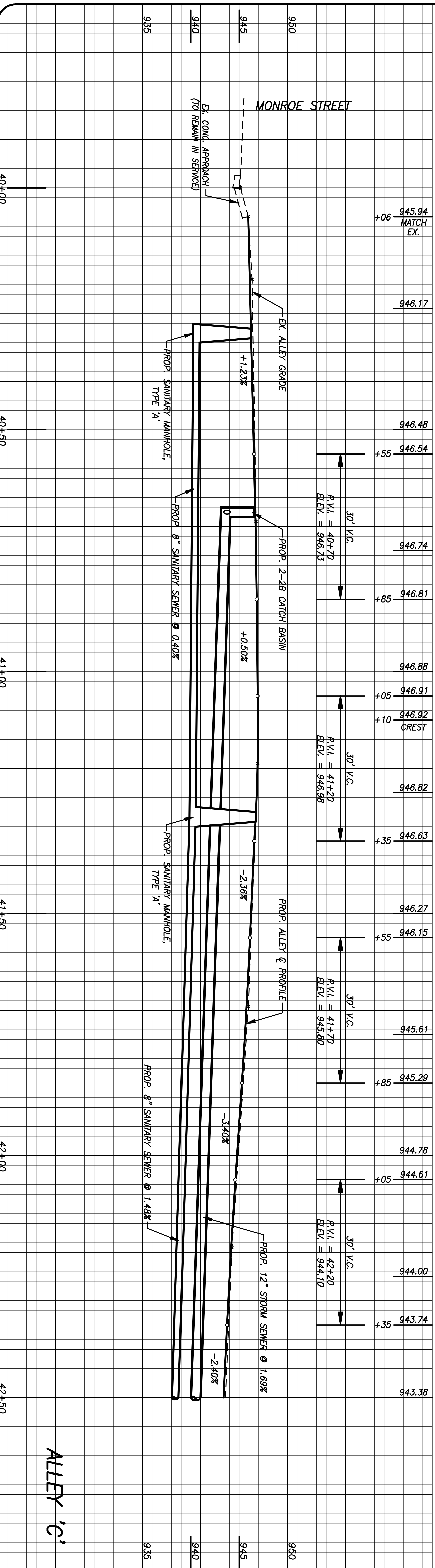
WILLIAM AND PAULA MAZE
O.R. 517 PG. 1291

⑤ PROPOSED STORM DRAINS

THE CONTRACTOR SHALL INSTALL 8" STORM DRAINS AT THE LOCATIONS SHOWN ON THE PLAN AND PROFILE SHEETS. THE DRAINS SHALL BE EITHER CONNECTED TO THE PROPOSED CATCH BASINS, WHERE SHOWN, OR CONNECTED TO THE PROPOSED STORM SEWER WITH AN INSERTA-TEE CONNECTION. THE STORM DRAINS SHALL BE EXTENDED TO THE LOCATION SHOWN, TWO 45° MANUFACTURED BENDS INSTALLED. THE LINE BROUGHT UP FLUSH WITH THE FINISH GRADE ELEVATION AND CAPPED. ALL STORM DRAINS SHALL BE INSTALLED AT MINIMUM GRADE OF 0.02% EXCEPT WHERE SHOWN OTHERWISE. THE LINE SHALL BE SUBSTITUTION FOR THE INSERTA-TEE CONNECTIONS.

- ⑤ - PROPOSED SANITARY SEWER LATERAL EXACT LOCATION OF LATERAL SHALL BE FIELD DETERMINED BETWEEN CONTRACTOR, VILLAGE AND PROPERTY OWNER. LATERAL SHALL BE CONNECTED TO EXISTING LATERAL OR CAPPED AT BASEMENT LINE.
- ⑥ - PROPOSED STORM SEWER LATERAL BE FIELD DETERMINED BETWEEN CONTRACTOR, VILLAGE AND PROPERTY OWNER.

203	EXCAVATION	EX.	100				
204	SUBGRADE COMPACTION	S.T.	285				
301	ASPHALT CONCRETE BASE	C.V.	31				
304	AGGREGATE BASE	C.V.	47				
448	ASPH. CONC. SURFACE COURSE TYPE 1	C.V.	15				
603	8" CONDUIT TYPE 'B' (707.33)	L.F.	68				
603	12" CONDUIT TYPE 'B' (707.33)	L.F.	183				
603	8" - 45° BEND (707.33)	EACH	12				
603	8" CAP	EACH	6				
604	2-2B CATCH BASIN, AS PER PLAN	EACH	1				
32 12 34	ASPHALT REJUVENATING AGENT (RECLAMITE)	S.Y.	272				
33 31 00	8" SANITARY SEWER	L.F.	220				
33 31 00	SANITARY SEWER LATERAL	EACH	6				
33 39 13	SANITARY MANHOLE TYPE 'A'	EACH	2				
	8" INSERTA TEE CONNECTION	EACH	4				



PLAN & PROFILE ~ ALLEY RECONSTRUCTION
THE VILLAGE OF NEW BREMEN
NEW BREMEN OHIO

DATE: 8-3-09
DRAWN: T.J.B.
CHECKED: J.L.M.
JOB NO. NB12080707
DRAWING NO. 1010892-R1

REVISIONS:

16
18

Mote & Associates, Inc.
ENGINEERING, LAND SURVEYING
214 WEST 4th STREET GREENVILLE, OHIO 45331
PHONE: (937) 548-7511 FAX: (937) 548-7484
E-MAIL: info@moteassociates.com WEBSITE: www.moteassociates.com