

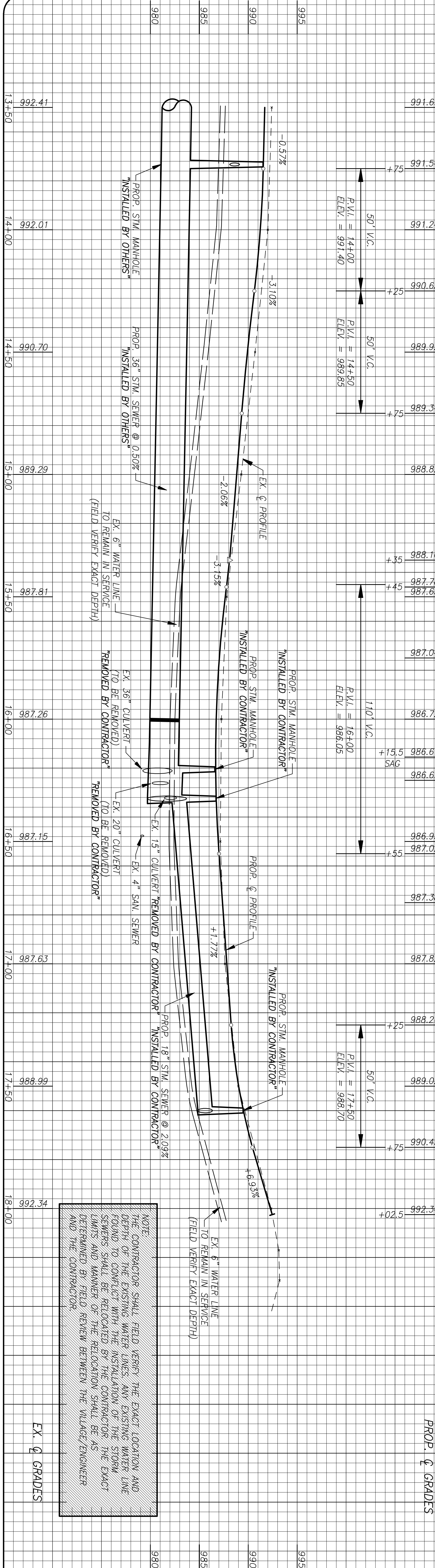
NO.	DESCRIPTION	QTY	UNIT
202	CATCH BASIN REMOVED	1	EACH
302	HEADWALL AND CULVERTS REMOVED **	1	LUMP
601	ROCK CHANNEL PROTECTION TYPE 'B' W/FILTER	10.5	LSY
602	HEADWALL, AS PER PLAN	1	EACH
603	12" CONDUIT TYPE 'B' (707.33)	22	LF
603	15" CONDUIT TYPE 'B' (707.33)	80	LF
603	18" CONDUIT TYPE 'B' (707.33)	152	LF
603	36" CONDUIT TYPE 'B' (707.33)	20	LF
603	42" CONDUIT TYPE 'B' (706.02)	32	LF
603	48" CONDUIT TYPE 'B' (706.02)	40	LF
604	STORM MANHOLE TYPE 'A' (48" BASE)	1	EACH
604	STORM MANHOLE TYPE 'A' (96" BASE)	2	EACH
604	CATCH BASIN ODOT 2-2B	2	EACH
604	CATCH BASIN TYPE 'A' AS PER PLAN	1	EACH
609	SEEDING AND MULCHING, AS PER PLAN	250	SQ. FT.
33	6" WATER LINE (AWWA C-900)	11	LF
33	6" - 22 1/2" BEND	4	EACH
33	6" CUTTING-IN-SLEEVE	2	EACH

NO.	DESCRIPTION	QTY	UNIT
1	EX. STORM MANHOLE	1	EACH
2	EX. 15" INV. (E-N) = 985.27	1	EACH
3	EX. SANITARY MANHOLE	1	EACH
4	EX. 1" INV. (S) = 979.27	1	EACH
5	EX. 4" INV. (N) = 979.27	1	EACH
6	EX. 4" INV. (N) = 980.27	1	EACH
7	EX. 4" INV. (N) = 980.27	1	EACH
8	EX. 4" INV. (N) = 980.27	1	EACH
9	EX. 4" INV. (N) = 980.27	1	EACH
10	EX. 4" INV. (N) = 980.27	1	EACH
11	EX. 4" INV. (N) = 980.27	1	EACH
12	EX. 4" INV. (N) = 980.27	1	EACH
13	EX. 4" INV. (N) = 980.27	1	EACH
14	EX. 4" INV. (N) = 980.27	1	EACH
15	EX. 4" INV. (N) = 980.27	1	EACH
16	EX. 4" INV. (N) = 980.27	1	EACH
17	EX. 4" INV. (N) = 980.27	1	EACH
18	EX. 4" INV. (N) = 980.27	1	EACH
19	EX. 4" INV. (N) = 980.27	1	EACH
20	EX. 4" INV. (N) = 980.27	1	EACH

PROF. G GRADES

EX. G GRADES

NOTE: THE CONTRACTOR SHALL FIELD VERIFY THE EXACT LOCATION AND DEPTH OF THE EXISTING WATER LINES. ANY EXISTING WATER LINE FOUND TO CONFLICT WITH THE INSTALLATION OF THE STORM SEWERS SHALL BE RELOCATED BY THE CONTRACTOR. THE EXACT LIMITS AND MANNER OF THE RELOCATION SHALL BE AS DETERMINED BY FIELD REVIEW BETWEEN THE VILLAGE ENGINEER AND THE CONTRACTOR.



REVISIONS:
6-24-09 - REVISED DRAINAGE

DATE: 2-20-09

DRAWN: T.J.B.

CHECKED: J.L.M.

JOB NO.: LA12090907

DRAWING NO.: 1D10638-R1