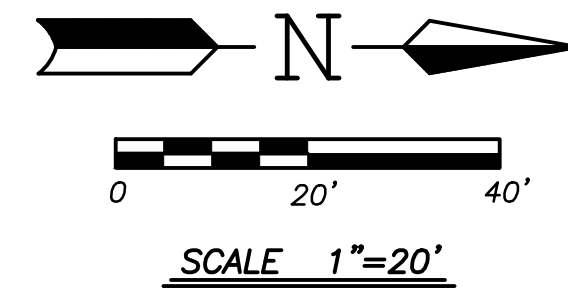
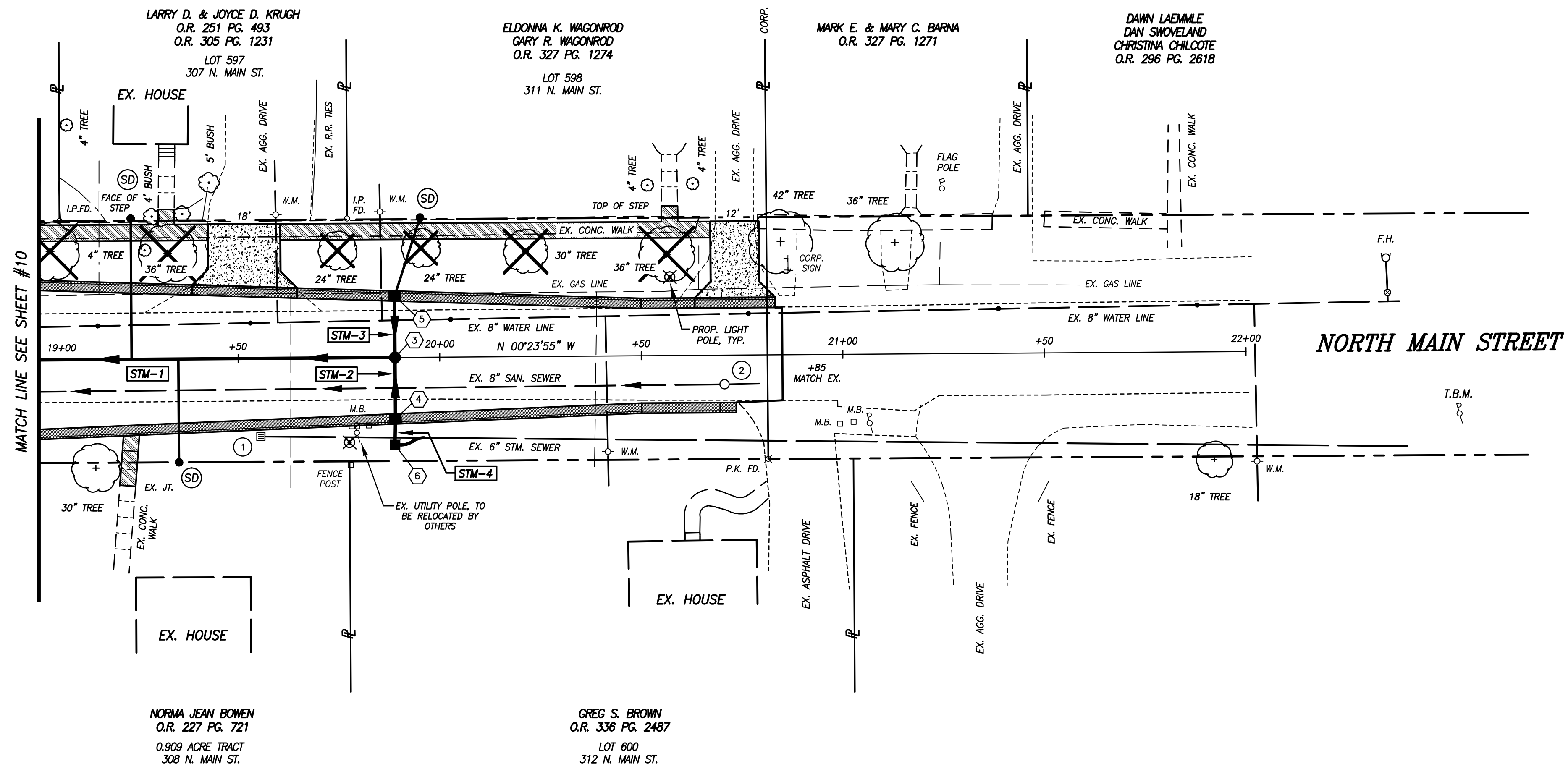


- ① EX. CATCH BASIN
EX. GRATE = 815.76
EX. 6" INV. (N) = 813.31
(TO BE REMOVED)
- ② EX. SANITARY MANHOLE
EX. TOP = 816.73
EX. 8" INV. (N-S) = 810.38
- ③ PROP. STM. MANHOLE, TYPE 'A'
STA. 19+88.9, ϕ
TOP = 815.94
12" INV. (S) = 812.58
12" INV. (E-W) = 812.68
- ④ PROP. CATCH BASIN TYPE 'A',
AS PER PLAN
STA. 19+88.9, 16.0' RT.
T/C = 815.92
GRATE = 815.38
12" INV. (E-W) = 812.88
- ⑤ PROP. CATCH BASIN TYPE 'A',
AS PER PLAN
STA. 19+88.9, 16.0' LT.
T/C = 815.92
GRATE = 815.38
12" INV. (E) = 812.88
8" INV. (W) = 812.98
- ⑥ PROP. CATCH BASIN, ODOT 2-2B
STA. 19+88.9, 21.7' RT.
GRATE = 815.50
12" INV. (W) = 812.94
CONNECT EX. 6" STM. DRAIN LINE



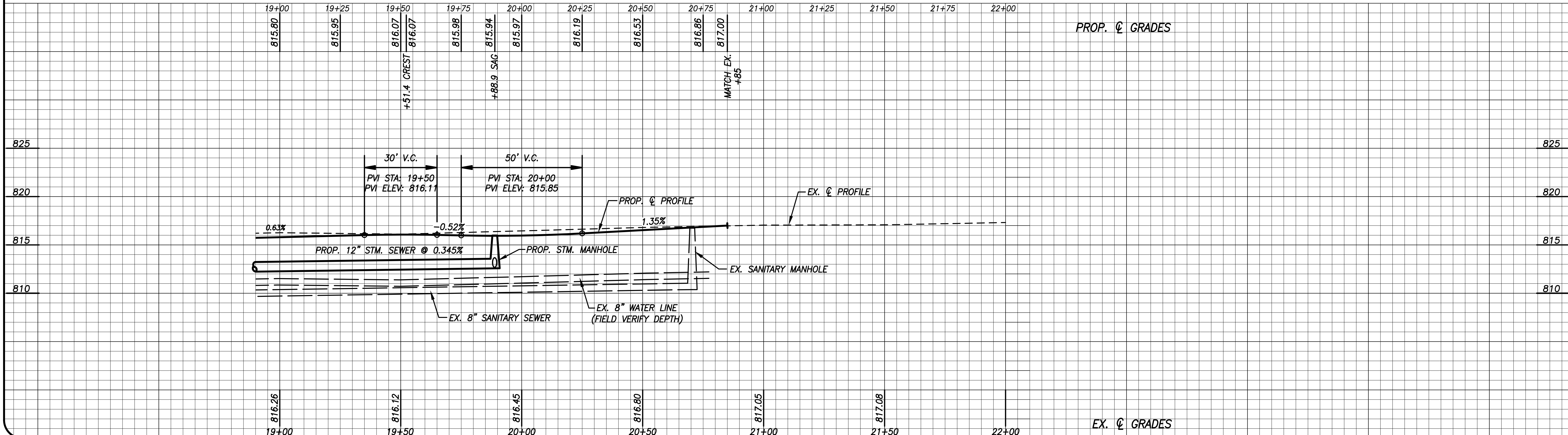
BENCHMARK
SPIKE IN POWER POLE
STA. 22+53, RT.
ELEV. = 817.08

PROP. LIGHT POLE BASES
STA. 19+77.5, 21' RT.
STA. 20+57, 19.5' LT.



- STM-1 PROP. 89 L.F. - 12" CONDUIT TYPE 'B' @ 0.345%
- STM-2 PROP. 15 L.F. - 12" CONDUIT TYPE 'B' @ 1.33%
- STM-3 PROP. 15 L.F. - 12" CONDUIT TYPE 'B' @ 1.33%
- STM-4 PROP. 6 L.F. - 12" CONDUIT TYPE 'B' @ 1.00%

202	202	202	204	301	304	408	448	448	452	603	603	603	603	604	604	604	608	609	625	625	625	659	32 12 34	SPEC.
WALK REMOVED	CONCRETE PAVEMENT REMOVED, STREET	CATCH BASIN REMOVED	SUBGRADE COMPACTION	ASPHALT CONCRETE BASE	AGGREGATE BASE, AS PER PLAN	PRIME COAT	ASPH. CONC. SURFACE COURSE TYPE 1	ASPH. CONC. INTERMEDIATE COURSE TYPE 2	NON-REINFORCED CONCRETE PAVEMENT	8" CONDUIT TYPE 'B' (707.33)	12" CONDUIT TYPE 'B' (707.33)	8" - 45° BEND (707.33)	8" CAP (707.33)	STORM MANHOLE TYPE 'A'	CATCH BASIN TYPE 'A'	CATCH BASIN ODOT 2-2B	CONCRETE WALK, AS PER PLAN	COMBINATION CURB & GUTTER, AS PER PLAN	CONDUIT, 1 1/2" PVC (725.051) AND CONDUCTORS	LIGHT POLE BASE WITH ANCHOR BOLTS	LIGHT POLE AND FIXTURE, AS PER PLAN	SEEDING AND MULCHING, AS PER PLAN	ASPHALT RELIEVING AGENT (RECLAMITE)	8" INSERT-TEE CONNECTION
S.F. 682	S.Y. 460	EACH 1	S.Y. 575	C.Y. 95.7	C.Y. 95.7	GAL. 230	C.Y. 24	C.Y. 28	S.Y. 59.8	L.F. 92	L.F. 125	EACH 6	EACH 3	EACH 1	EACH 2	EACH 1	S.F. 676	L.F. 357	L.F. 240	EACH 2	EACH 2	S.Y. 425	S.Y. 575	EACH 2



Mote & Associates, Inc.
ENGINEERING, LAND SURVEYING
214 WEST 4th STREET
GREENVILLE, OHIO 45331
PHONE: (937) 546-7511
FAX: (937) 546-7484
E-MAIL: info@moteassociates.com
WWW: www.moteassociates.com

PLAN AND PROFILE ~ NORTH MAIN STREET
THE VILLAGE OF OHIO CITY
OHIO CITY
OHIO

REVISIONS:
7-6-11 - ADDENDUM REVISIONS
DATE: 6-24-11
DRAWN: T.J.B.
CHECKED: J.L.M.

11
16
JOB NO.
OC06060311
DRAWING NO.
1D11548-R1