

- 1 EX. STORM MANHOLE  
EX. TOP = 820.50  
EX. 36" INV. (E-W) = 813.18  
PROP. 18" INV. (N) = 813.18
- 2 EX. CATCH BASIN  
EX. GRATE = 816.71  
6" ELBOW (W) = 813.8  
BTM. OF C.B. = 812.4  
(TO BE REMOVED)
- 3 EX. CATCH BASIN  
EX. TOP = 816.81  
6" ELBOW (NE) = 814.75  
BTM. OF C.B. = 813.5  
(TO BE REMOVED)
- 4 EX. STORM MANHOLE  
EX. TOP = 816.09  
EX. 8" INV. (N) = 812.64  
EX. 6" INV. (W) = 812.9  
EX. 6" INV. (S) = 813.2  
EX. 6" INV. (E) = 813.6  
(TO BE REMOVED, CONNECT  
EX. 6" FROM WEST THROUGH  
TO EX. 8" NORTH)
- 5 EX. CATCH BASIN  
EX. GRATE = 816.62  
6" ELBOW (W) = 813.8  
BTM. OF C.B. = 811.8  
(TO BE REMOVED)
- 6 EX. CATCH BASIN  
EX. GRATE = 816.41  
6" ELBOW (SE) = 814.5  
BTM. OF C.B. = 812.3  
(TO BE REMOVED)
- 7 EX. STORM MANHOLE  
EX. TOP = 816.40  
EX. 10" INV. (E) = 812.50  
EX. 6" INV. (NW) = 813.85  
EX. 6" INV. (S) = 813.55  
(TO BE REMOVED)

- 8 PROP. STM. MANHOLE, TYPE 'A'  
STA. 13+02.5, 20.0' RT.  
TOP = 816.78  
18" INV. (S) = 813.62  
12" INV. (E-W) = 813.72
- 9 PROP. CATCH BASIN TYPE 'A',  
AS PER PLAN  
STA. 13+02.5, 20.0' RT.  
T/C = 816.68  
GRATE = 815.14  
12" INV. (W) = 813.72  
8" INV. (E) = 813.72

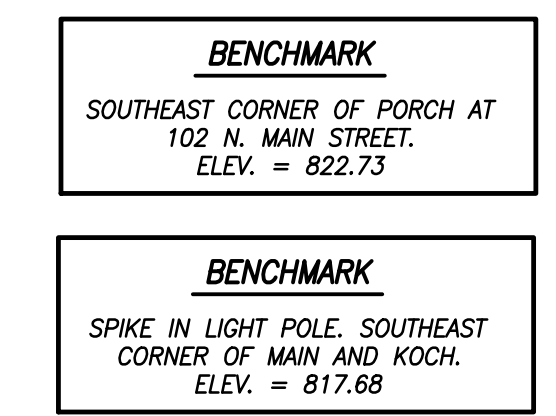
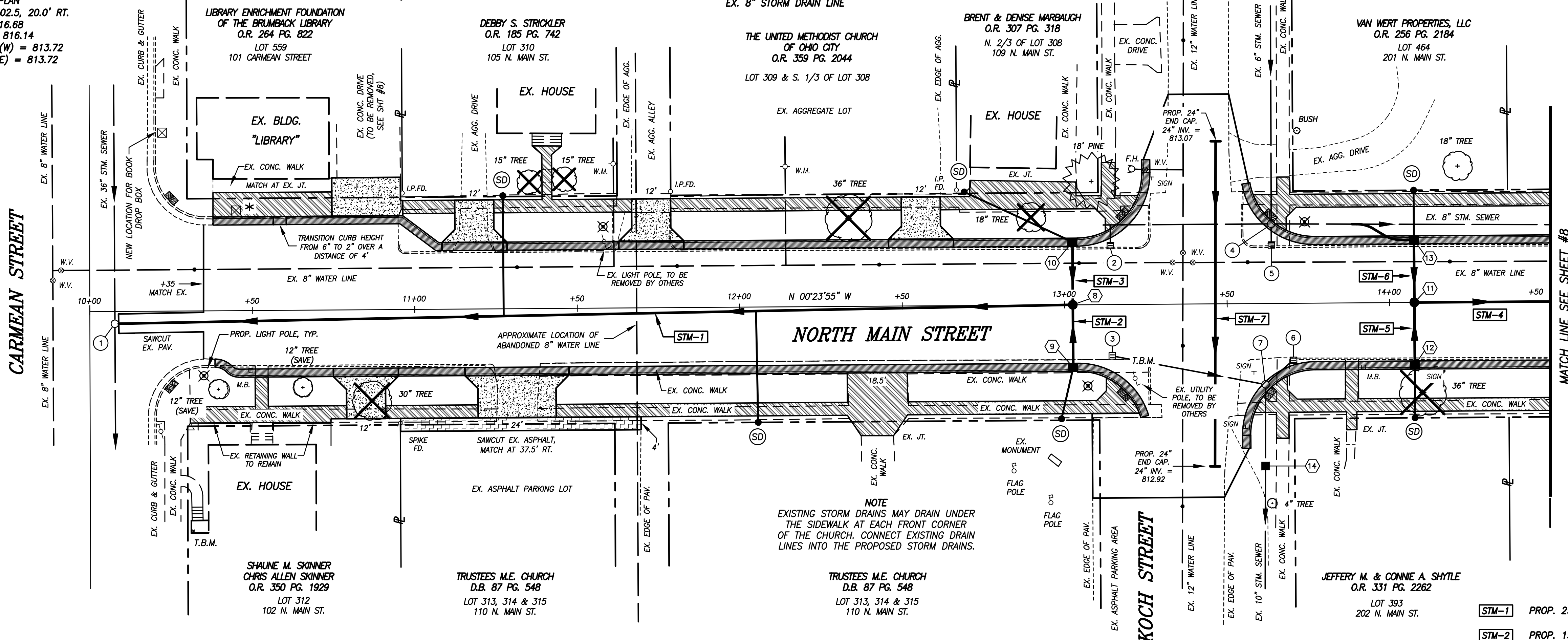
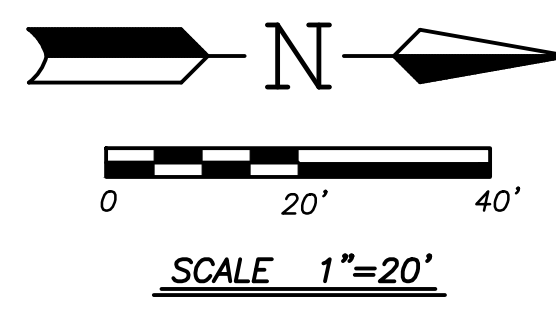
- 10 PROP. CATCH BASIN TYPE 'A',  
AS PER PLAN  
STA. 13+02.5, 20.0' LT.  
T/C = 816.68  
GRATE = 815.14  
12" INV. (E) = 813.72  
8" INV. (SW) = 813.72

- 11 PROP. STM. MANHOLE, TYPE 'A'  
STA. 14+07.6, 20.0' RT.  
TOP = 815.95  
15" INV. (N) = 812.20  
12" INV. (E-W) = 812.30
- 12 PROP. CATCH BASIN TYPE 'A',  
AS PER PLAN  
STA. 14+07.6, 20.0' RT.  
T/C = 815.85  
GRATE = 815.31  
12" INV. (W) = 812.50  
8" INV. (E) = 812.60

- 13 PROP. CATCH BASIN TYPE 'A',  
AS PER PLAN  
STA. 14+07.6, 20.0' LT.  
T/C = 815.85  
GRATE = 815.31  
12" INV. (E) = 812.50  
8" INV. (W) = 812.60  
8" INV. (S) = 812.60, CONNECT  
EX. 8" STORM DRAIN LINE

\* EX. LIBRARY BOOK DROP BOX  
EX. BOX IS BOLTED/FASTENED TO THE CONCRETE  
SIDEWALK. CONTRACTOR SHALL REMOVE, RELOCATE  
AND REINSTALL THE BOX. THE BOX SHALL BE  
BOLTED/FASTENED TO THE NEW SIDEWALK IN A  
SIMILAR MANNER AS THE EXISTING. THE COST OF ALL  
LABOR, EQUIPMENT AND MATERIALS NECESSARY TO  
REMOVE AND REINSTALL THE BOX SHALL BE  
INCLUDED IN THE CONTRACTOR'S LUMP SUM BID FOR  
ITEM SPEC. "DROP BOX REMOVED AND REINSTALLED".

ITEM 448 - 2" ASPHALT CONCRETE SURFACE COURSE  
ITEM 304 - 8" COMPACTED AGGREGATE BASE (2 LIFTS)

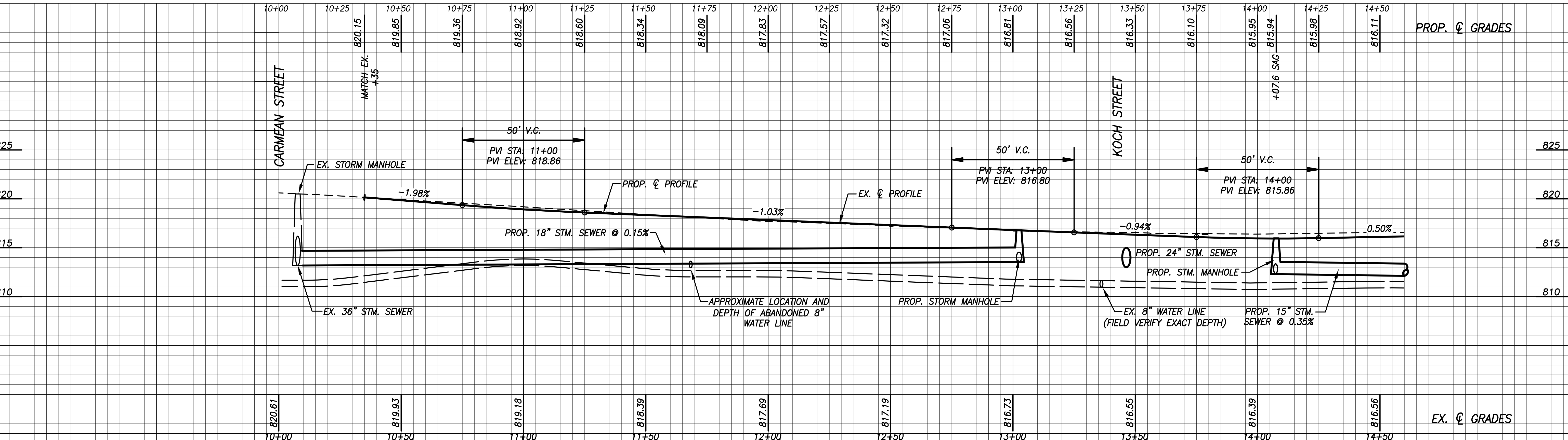


- PROP. LIGHT POLE BASES  
STA. 10+35, 20' RT.  
STA. 11+58, 25' LT.  
STA. 13+07, 25' RT.  
STA. 13+74, 25' LT.

- 14 PROP. CATCH BASIN, ODOT 2-2B  
STA. ±13+61.4, 50' RT.  
CONSTRUCT OVER EX. 10" STM. EAST.  
GRATE = 816.10  
EX. 10" INV. = ±812.4 (FIELD VERIFY)

- STM-1 PROP. 293 L.F. - 18" CONDUIT TYPE 'B' @ 0.15%
- STM-2 PROP. 19 L.F. - 12" CONDUIT TYPE 'B' @ 0.52%
- STM-3 PROP. 19 L.F. - 12" CONDUIT TYPE 'B' @ 0.52%
- STM-4 PROP. 42 L.F. - 15" CONDUIT TYPE 'B' @ 0.35%
- STM-5 PROP. 19 L.F. - 12" CONDUIT TYPE 'B' @ 1.05%
- STM-6 PROP. 19 L.F. - 12" CONDUIT TYPE 'B' @ 1.05%
- STM-7 PROP. 100 L.F. - 24" CONDUIT TYPE 'B' @ 0.15%

WALK REMOVED	CONCRETE PAVEMENT REMOVED, STREET	MANHOLE REMOVED	CATCH BASIN REMOVED	SUBGRADE COMPACTION	ASPHALT CONCRETE BASE	AGGREGATE AS PER PLAN	PRIME COAT	ASPH. CONC. SURFACE COURSE	ASPH. CONC. INTERMEDIATE COURSE	NON-REINFORCED CONCRETE PAVEMENT	8" CONDUIT TYPE 'B' (707.33)	12" CONDUIT TYPE 'B' (707.33)	15" CONDUIT TYPE 'B' (707.33)	18" CONDUIT TYPE 'B' (707.33)	24" CONDUIT TYPE 'B' (707.33)	24" END CAP (707.33)	8" - 45° BEND (707.33)	8" CAP (707.33)	STORM MANHOLE TYPE 'A'	CATCH BASIN TYPE 'A'	CATCH BASIN ODOT 2-2B	CONCRETE WALK, AS PER PLAN	CURB RAMP WITH CURVICATED BOMES	COMBINATION CURB & GUTTER, AS PER PLAN	CONDUIT 1 1/2" PVC (725.051) AND CONDUCTORS	LIGHT POLE BASE WITH ANCHOR BOLTS	LIGHT POLE AND FIXTURE, AS PER PLAN	SEEDING AND MULCHING, AS PER PLAN	ASPHALT RECLAIMING AGENT (RECLAMITE)	8" INSERT-TEE CONNECTION	DROP BOX REMOVED AND REINSTALLED	SPEC.	SPEC.
S.F.	S.Y.	EACH	EACH	S.Y.	C.Y.	C.Y.	GAL.	C.Y.	C.Y.	S.Y.	L.F.	L.F.	L.F.	L.F.	L.F.	EACH	EACH	EACH	EACH	EACH	EACH	S.F.	EACH	L.F.	L.F.	EACH	EACH	S.Y.	S.Y.	EACH	LUMP		
4926	1620	2	4	2084	347.3	354.5	834	88.6	101.3	140.9	175	76	42	293	100	2	12	6	2	4	3624	4	810	820	4	4	735	2084	2				



Mote & Associates, Inc.  
ENGINEERING, LAND SURVEYING  
214 WEST 4th STREET  
GREENVILLE, OHIO 45331  
PHONE: (937) 548-7511  
FAX: (937) 548-7484  
E-MAIL: info@moteassociates.com  
WWW: www.moteassociates.com

PLAN AND PROFILE ~ NORTH MAIN STREET  
THE VILLAGE OF OHIO CITY  
OHIO CITY, OHIO

REVISIONS:  
7-6-11 - ADDENDUM REVISIONS

DATE: 6-24-11  
DRAWN: T.J.B.  
CHECKED: J.L.M.

9  
16

JOB NO.  
OC06060311

DRAWING NO.  
1D11546-R1